

# Fuel Hedge Program

MTA Finance Committee  
September 2012



# Hedge Activity

## Ultra Low Sulfur Diesel Hedges

	<b>Start</b>	<b>End</b>	<b>Lock in Price/Gal</b>	<b>Gallons Hedged/Mn</b>
Trade 1	Mar-2011	Feb-2012	\$3.160	527,426
Trade 2	Apr-2011	Mar-2012	\$3.117	534,788
Trade 3	Jun-2011	May-2012	\$3.050	546,448
Trade 4	Jun-2011	May-2012	\$2.980	559,284
Trade 5	Jul-2011	Jun-2012	\$2.852	292,193
Trade 6	Jan-2012	Jun-2013	\$2.889	1,115,342
Trade 7	Mar-2012	Aug-2013	\$3.121	356,011
Trade 8	Apr-2012	Sep-2013	\$3.213	207,523
Trade 9	May-2012	Oct-2013	\$3.161	193,328
Trade 10	Jun-2012	Nov-2013	\$2.995	176,219
Trade 11	Jun-2012	Nov-2013	\$2.767	200,779
Trade 12	Aug-2012	Jan-2014	\$2.696	154,550
Trade 13	Sep-2012	Feb-2014	\$2.915	127,692
Trade 14	Oct-2012	Mar-2014	\$3.057	129,030

## Natural Gas Hedge

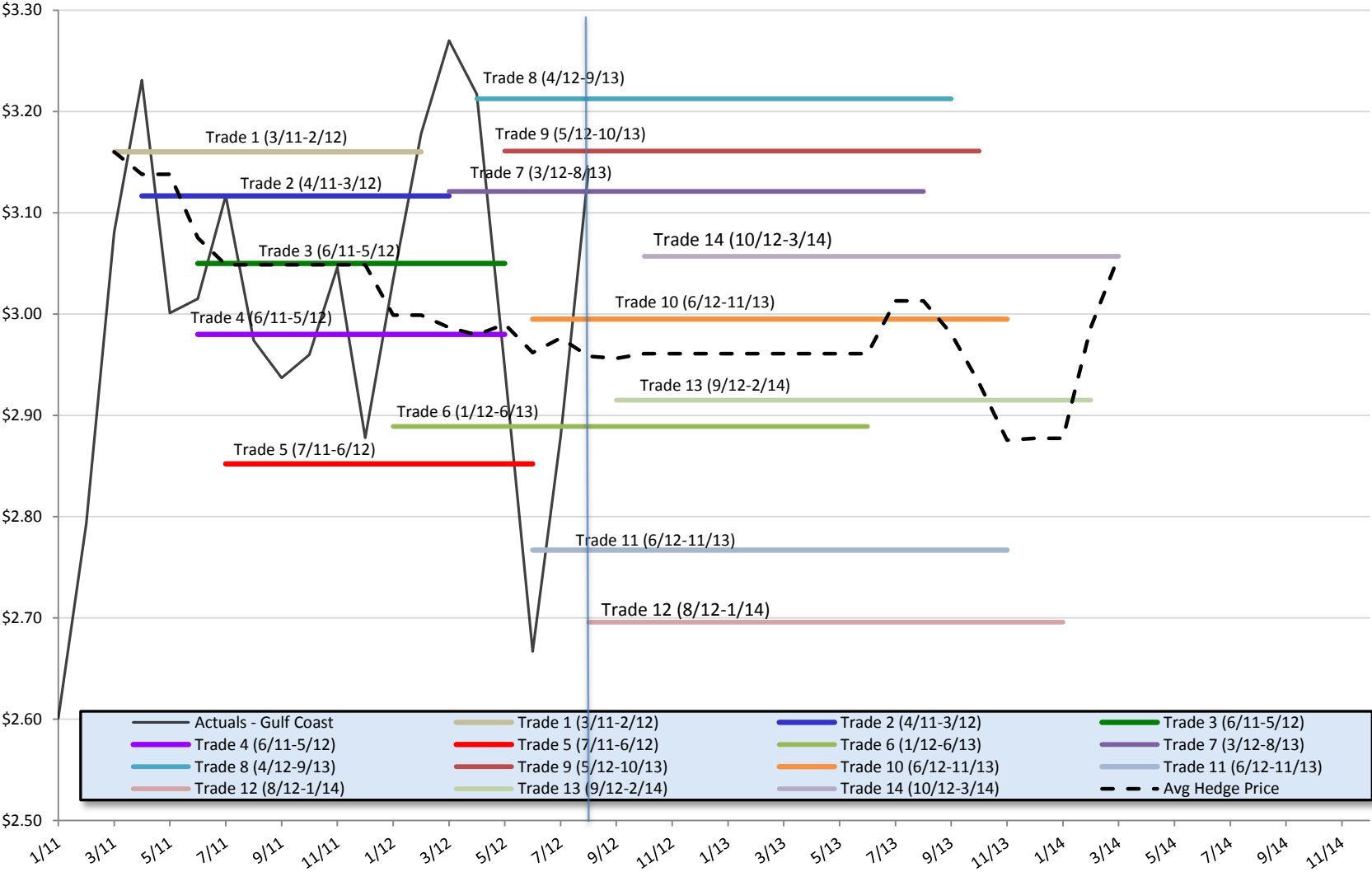
	<b>Start</b>	<b>End</b>	<b>Lock in Price/MMBtu</b>	<b>MMBtus Hedged/Mn</b>
Trade 1	Apr-2011	Mar-2012	\$4.242	235,766

Assumed commodity prices in the Financial Plan

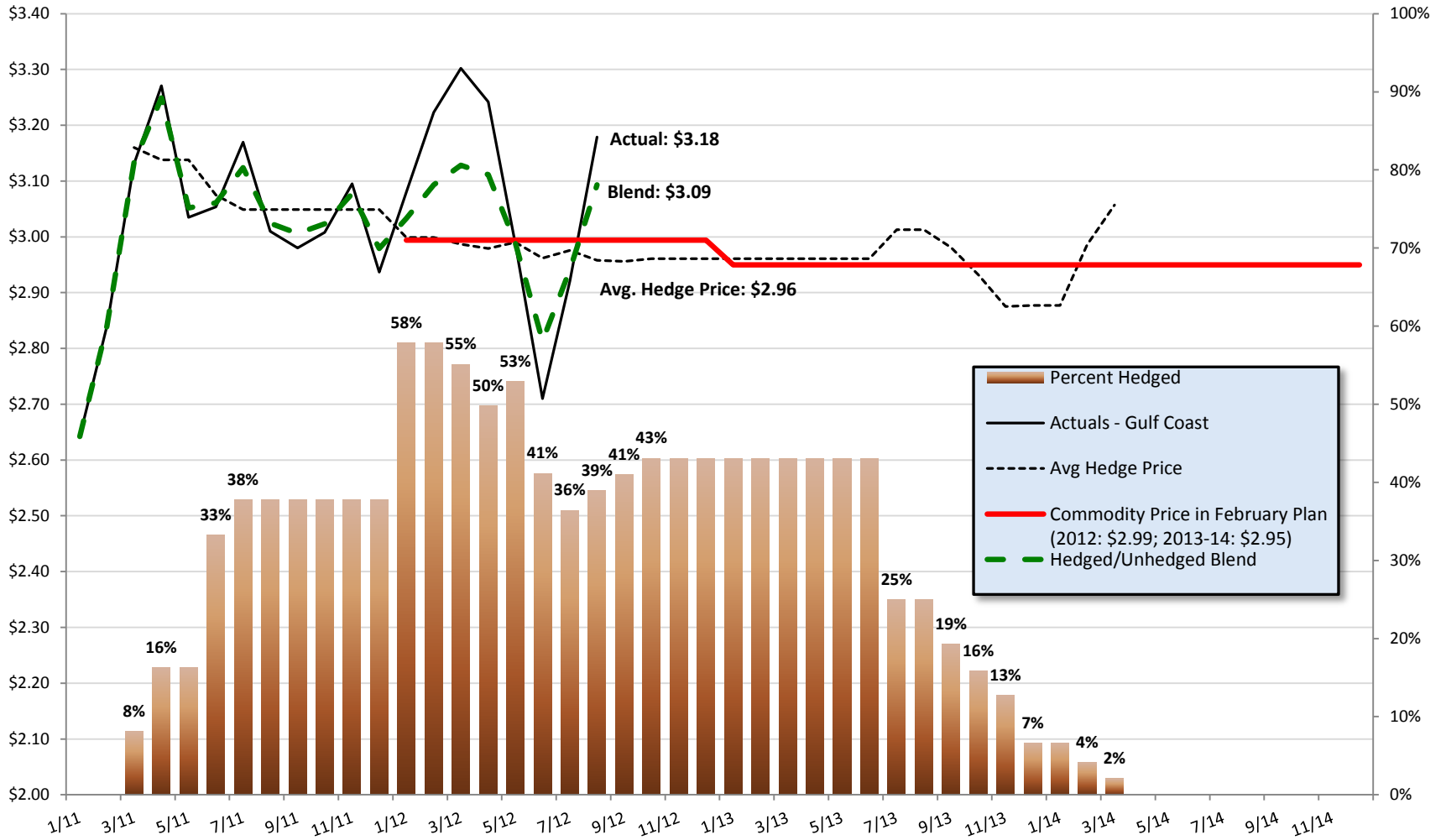
Ultra Low Sulfur Diesel: \$2.99 for 2012 / \$2.95 for 2013

Natural Gas: \$4.16 for 2012 / \$4.70 for 2013

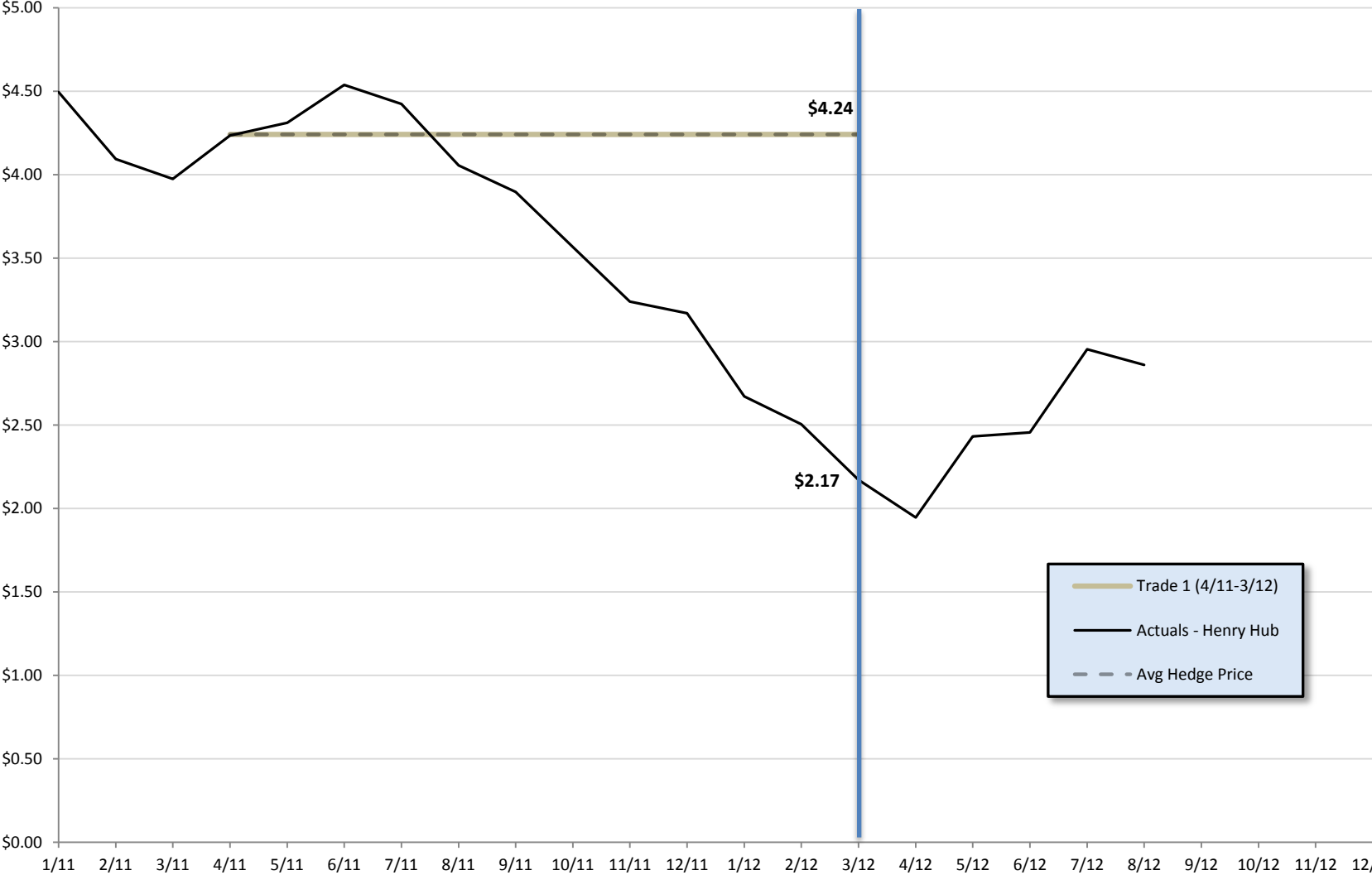
# ULSD - Actual and Hedge Prices



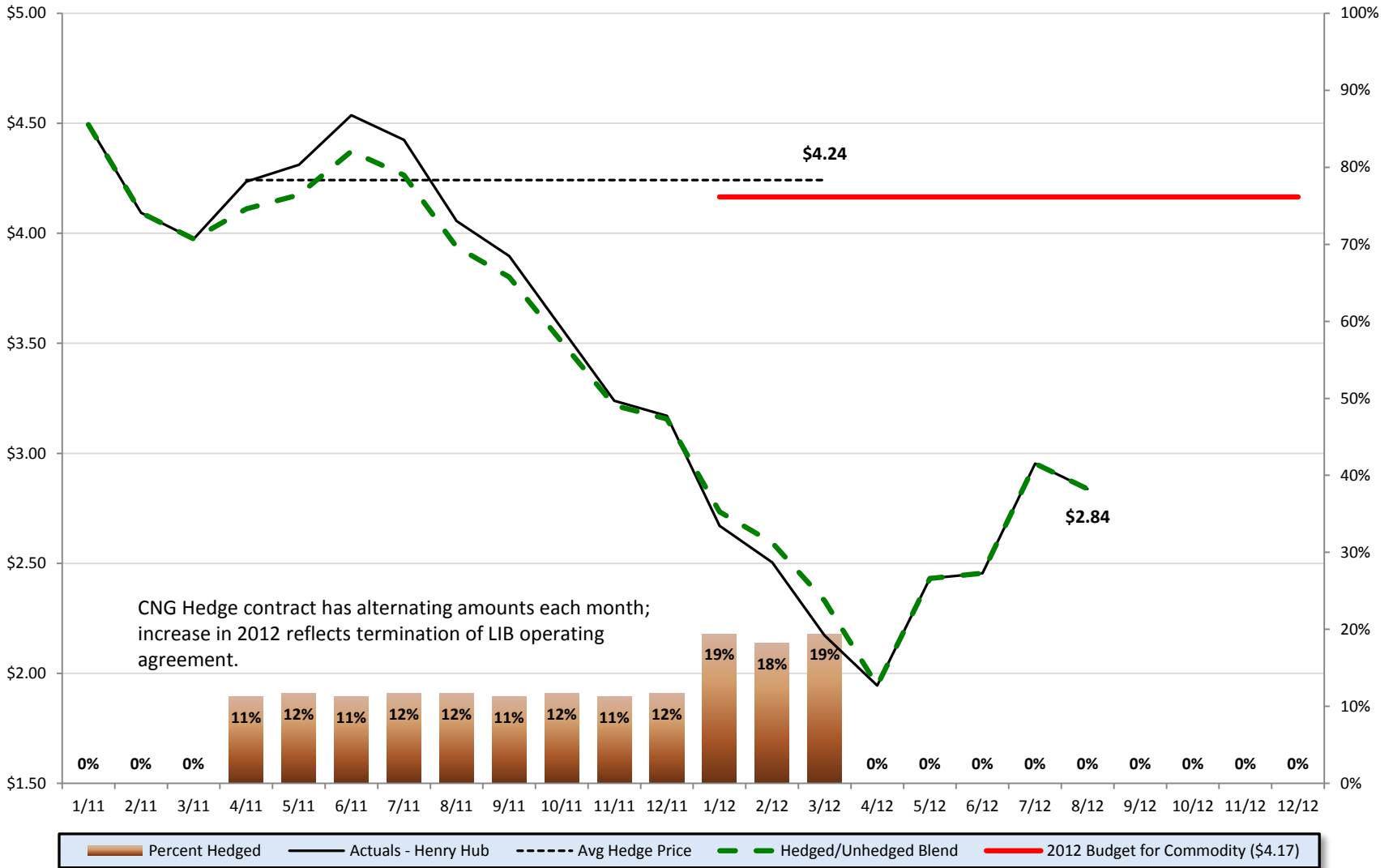
# ULSD - Hedges Impact on Price



# CNG - Actual and Hedge Prices



# CNG - Hedges Impact on Price



# Annual Impact on Financial Plan

## (as of 9/19/2012)

	(\$ in millions)	
	2012	2013
<b><u>Ultra Low Sulfur Diesel</u></b>		
Current Prices vs. Adopted Budget	(\$7.238)	\$28.466
Impact of Hedge	<u>3.104</u>	<u>(0.446)</u>
<b>Net Impact: Fav/(Unfav)</b>	(\$4.134)	\$28.019
<b><u>Compressed Natural Gas</u></b>		
Current Prices vs. Adopted Budget	\$32.483	\$27.215
Impact of Hedge	<u>(1.157)</u>	<u>0.000</u>
<b>Net Impact: Fav/(Unfav)</b>	\$31.326	\$27.215
<b><u>Summary</u></b>		
Current Prices vs. Adopted Budget	\$25.245	\$55.681
Impact of Hedge	<u>1.947</u>	<u>(0.446)</u>
<b>Net Impact: Fav/(Unfav)</b>	\$27.191	\$55.234

Estimated impact based on monthly average price times forecast usage, which may differ from actual purchases.